

Test Report

No. CANEC0906236101

Date: 29 Dec 2009

Page 1 of 8

YONGSON TECHNOLOGY CO.,LTD.

ROOM 804,8 FLOOR,TIANJUN BUILDING,3001 DONGMEN NAN RD.,LUOHU,SHENZHEN CITY
CHINA

The following sample(s) was/were submitted and identified on behalf of the clients as :
capacitor

SGS Job No. : 12308748 - SZ

SGS Internal Reference No. : 2.1

Date of Sample Received : 24 Dec 2009

Testing Period : 24 Dec 2009 - 29 Dec 2009

Test Requested : Selected test(s) as requested by client.

Test Method : Please refer to next page(s).

Test Results : Please refer to next page(s).

Conclusion : Based on the performed tests on submitted sample(s), the results **comply with** the RoHS Directive 2002/95/EC and its subsequent amendments.

Signed for and on behalf of
SGS-CSTC Ltd.



Manson Yang
Sr. Engineer

This document is issued by the Company under its General Conditions of Service printed overleaf or available on request and accessible at http://www.sgs.com/terms_and_conditions.htm. Attention is drawn to the limitation of liability, indemnification and jurisdiction issues defined therein. Any holder of this document is advised that information contained hereon reflects the Company's findings at the time of its intervention only and within the limits of Client's instructions, if any. The Company's sole responsibility is to its Client and this document does not exonerate parties to a transaction from exercising all their rights and obligations under the transaction documents. Any unauthorized alteration, forgery or falsification of the content or appearance of this document is unlawful and offenders may be prosecuted to the fullest extent of the law. Unless otherwise stated the results shown in this test report refer only to the sample(s) tested. This document cannot be reproduced except in full, without prior approval of the Company.

Test Report

No. CANEC0906236101

Date: 29 Dec 2009

Page 2 of 8

Test Results:

ID for specimen 1 : CAN09-062361.001
 Description for specimen 1 : Green material w/ silvery printing (shell)

RoHS Directive 2002/95/EC

| Test Item(s) | Unit | Test Method (Reference) | Result | MDL | Limit |
|---|-------|-------------------------|--------|-----|-------|
| Cadmium (Cd) | mg/kg | IEC 62321:2008, ICP-OES | N.D. | 2 | 100 |
| Lead (Pb) | mg/kg | IEC 62321:2008, ICP-OES | N.D. | 2 | 1000 |
| Mercury (Hg) | mg/kg | IEC 62321:2008, ICP-OES | N.D. | 2 | 1000 |
| Hexavalent Chromium (CrVI) by alkaline extraction | mg/kg | IEC 62321:2008, UV-Vis | N.D. | 2 | 1000 |
| Sum of PBBs | mg/kg | - | N.D. | - | 1000 |
| Monobromobiphenyl | mg/kg | IEC 62321:2008, GC-MS | N.D. | 5 | |
| Dibromobiphenyl | mg/kg | IEC 62321:2008, GC-MS | N.D. | 5 | |
| Tribromobiphenyl | mg/kg | IEC 62321:2008, GC-MS | N.D. | 5 | |
| Tetrabromobiphenyl | mg/kg | IEC 62321:2008, GC-MS | N.D. | 5 | |
| Pentabromobiphenyl | mg/kg | IEC 62321:2008, GC-MS | N.D. | 5 | |
| Hexabromobiphenyl | mg/kg | IEC 62321:2008, GC-MS | N.D. | 5 | |
| Heptabromobiphenyl | mg/kg | IEC 62321:2008, GC-MS | N.D. | 5 | |
| Octabromobiphenyl | mg/kg | IEC 62321:2008, GC-MS | N.D. | 5 | |
| Nonabromobiphenyl | mg/kg | IEC 62321:2008, GC-MS | N.D. | 5 | |
| Decabromobiphenyl | mg/kg | IEC 62321:2008, GC-MS | N.D. | 5 | |
| Sum of PBDEs | mg/kg | - | N.D. | - | 1000 |
| Monobromodiphenyl ether | mg/kg | IEC 62321:2008, GC-MS | N.D. | 5 | |
| Dibromodiphenyl ether | mg/kg | IEC 62321:2008, GC-MS | N.D. | 5 | |
| Tribromodiphenyl ether | mg/kg | IEC 62321:2008, GC-MS | N.D. | 5 | |
| Tetrabromodiphenyl ether | mg/kg | IEC 62321:2008, GC-MS | N.D. | 5 | |
| Pentabromodiphenyl ether | mg/kg | IEC 62321:2008, GC-MS | N.D. | 5 | |
| Hexabromodiphenyl ether | mg/kg | IEC 62321:2008, GC-MS | N.D. | 5 | |
| Heptabromodiphenyl ether | mg/kg | IEC 62321:2008, GC-MS | N.D. | 5 | |
| Octabromodiphenyl ether | mg/kg | IEC 62321:2008, GC-MS | N.D. | 5 | |
| Nonabromodiphenyl ether | mg/kg | IEC 62321:2008, GC-MS | N.D. | 5 | |
| Decabromodiphenyl ether | mg/kg | IEC 62321:2008, GC-MS | N.D. | 5 | |

Note:

1. mg/kg = ppm
2. N.D. = Not Detected (< MDL)
3. MDL = Method Detection Limit
4. "-" = Not regulated

This document is issued by the Company under its General Conditions of Service printed overleaf or available on request and accessible at http://www.sgs.com/terms_and_conditions.htm. Attention is drawn to the limitation of liability, indemnification and jurisdiction issues defined therein. Any holder of this document is advised that information contained hereon reflects the Company's findings at the time of its intervention only and within the limits of Client's instructions, if any. The Company's sole responsibility is to its Client and this document does not exonerate parties to a transaction from exercising all their rights and obligations under the transaction documents. Any unauthorized alteration, forgery or falsification of the content or appearance of this document is unlawful and offenders may be prosecuted to the fullest extent of the law. Unless otherwise stated the results shown in this test report refer only to the sample(s) tested. This document cannot be reproduced except in full, without prior approval of the Company.

Test Report

No. CANEC0906236101

Date: 29 Dec 2009

Page 3 of 8

ID for specimen 2 : CAN09-062361.002
 Description for specimen 2 : Silvery metal pin

RoHS Directive 2002/95/EC

| Test Item(s) | Unit | Test Method (Reference) | Result | MDL | Limit |
|--|-------|-------------------------|----------|-----|-------|
| Cadmium (Cd) | mg/kg | IEC 62321:2008, ICP-OES | N.D. | 2 | 100 |
| Lead (Pb) | mg/kg | IEC 62321:2008, ICP-OES | N.D. | 2 | 1000 |
| Mercury (Hg) | mg/kg | IEC 62321:2008, ICP-OES | N.D. | 2 | 1000 |
| Hexavalent Chromium (CrVI) by boiling water extraction | - | IEC 62321:2008, UV-Vis | Negative | ◇ | # |

Note:

1. mg/kg = ppm
2. N.D. = Not Detected (< MDL)
3. MDL = Method Detection Limit
4. ◇ = Spot-Test:

Negative = Absence of CrVI coating, Positive = Presence of CrVI coating;
 (The tested sample should be further verified by boiling-water-extraction method if the spot test result is negative or cannot be confirmed.)

Boiling-water-extraction:

Negative = Absence of CrVI coating
 Positive = Presence of CrVI coating; the detected concentration in boiling-water-extraction solution is equal or greater than 0.02 mg/kg with 50 cm² sample surface area.

Storage conditions and production date of the tested sample are unavailable and thus results of Cr(VI) represent status of the sample at the time of testing.

5. # = Positive indicates the presence of CrVI on the tested areas.

Negative indicates the absence of CrVI on the tested areas.

6. " - " = Not regulated

This document is issued by the Company under its General Conditions of Service printed overleaf or available on request and accessible at http://www.sgs.com/terms_and_conditions.htm. Attention is drawn to the limitation of liability, indemnification and jurisdiction issues defined therein. Any holder of this document is advised that information contained hereon reflects the Company's findings at the time of its intervention only and within the limits of Client's instructions, if any. The Company's sole responsibility is to its Client and this document does not exonerate parties to a transaction from exercising all their rights and obligations under the transaction documents. Any unauthorized alteration, forgery or falsification of the content or appearance of this document is unlawful and offenders may be prosecuted to the fullest extent of the law. Unless otherwise stated the results shown in this test report refer only to the sample(s) tested. This document cannot be reproduced except in full, without prior approval of the Company.

Test Report

No. CANEC0906236101

Date: 29 Dec 2009

Page 4 of 8

ID for specimen 3 : CAN09-062361.003
 Description for specimen 3 : Silvery block

RoHS Directive 2002/95/EC

| Test Item(s) | Unit | Test Method (Reference) | Result | MDL | Limit |
|---|-------|-------------------------|--------|-----|-------|
| Cadmium (Cd) | mg/kg | IEC 62321:2008, ICP-OES | N.D. | 2 | 100 |
| Lead (Pb) | mg/kg | IEC 62321:2008, ICP-OES | N.D. | 2 | 1000 |
| Mercury (Hg) | mg/kg | IEC 62321:2008, ICP-OES | N.D. | 2 | 1000 |
| Hexavalent Chromium (CrVI) by alkaline extraction | mg/kg | IEC 62321:2008, UV-Vis | N.D. | 2 | 1000 |
| Sum of PBBs | mg/kg | - | N.D. | - | 1000 |
| Monobromobiphenyl | mg/kg | IEC 62321:2008, GC-MS | N.D. | 5 | |
| Dibromobiphenyl | mg/kg | IEC 62321:2008, GC-MS | N.D. | 5 | |
| Tribromobiphenyl | mg/kg | IEC 62321:2008, GC-MS | N.D. | 5 | |
| Tetrabromobiphenyl | mg/kg | IEC 62321:2008, GC-MS | N.D. | 5 | |
| Pentabromobiphenyl | mg/kg | IEC 62321:2008, GC-MS | N.D. | 5 | |
| Hexabromobiphenyl | mg/kg | IEC 62321:2008, GC-MS | N.D. | 5 | |
| Heptabromobiphenyl | mg/kg | IEC 62321:2008, GC-MS | N.D. | 5 | |
| Octabromobiphenyl | mg/kg | IEC 62321:2008, GC-MS | N.D. | 5 | |
| Nonabromobiphenyl | mg/kg | IEC 62321:2008, GC-MS | N.D. | 5 | |
| Decabromobiphenyl | mg/kg | IEC 62321:2008, GC-MS | N.D. | 5 | |
| Sum of PBDEs | mg/kg | - | N.D. | - | 1000 |
| Monobromodiphenyl ether | mg/kg | IEC 62321:2008, GC-MS | N.D. | 5 | |
| Dibromodiphenyl ether | mg/kg | IEC 62321:2008, GC-MS | N.D. | 5 | |
| Tribromodiphenyl ether | mg/kg | IEC 62321:2008, GC-MS | N.D. | 5 | |
| Tetrabromodiphenyl ether | mg/kg | IEC 62321:2008, GC-MS | N.D. | 5 | |
| Pentabromodiphenyl ether | mg/kg | IEC 62321:2008, GC-MS | N.D. | 5 | |
| Hexabromodiphenyl ether | mg/kg | IEC 62321:2008, GC-MS | N.D. | 5 | |
| Heptabromodiphenyl ether | mg/kg | IEC 62321:2008, GC-MS | N.D. | 5 | |
| Octabromodiphenyl ether | mg/kg | IEC 62321:2008, GC-MS | N.D. | 5 | |
| Nonabromodiphenyl ether | mg/kg | IEC 62321:2008, GC-MS | N.D. | 5 | |
| Decabromodiphenyl ether | mg/kg | IEC 62321:2008, GC-MS | N.D. | 5 | |

Note:

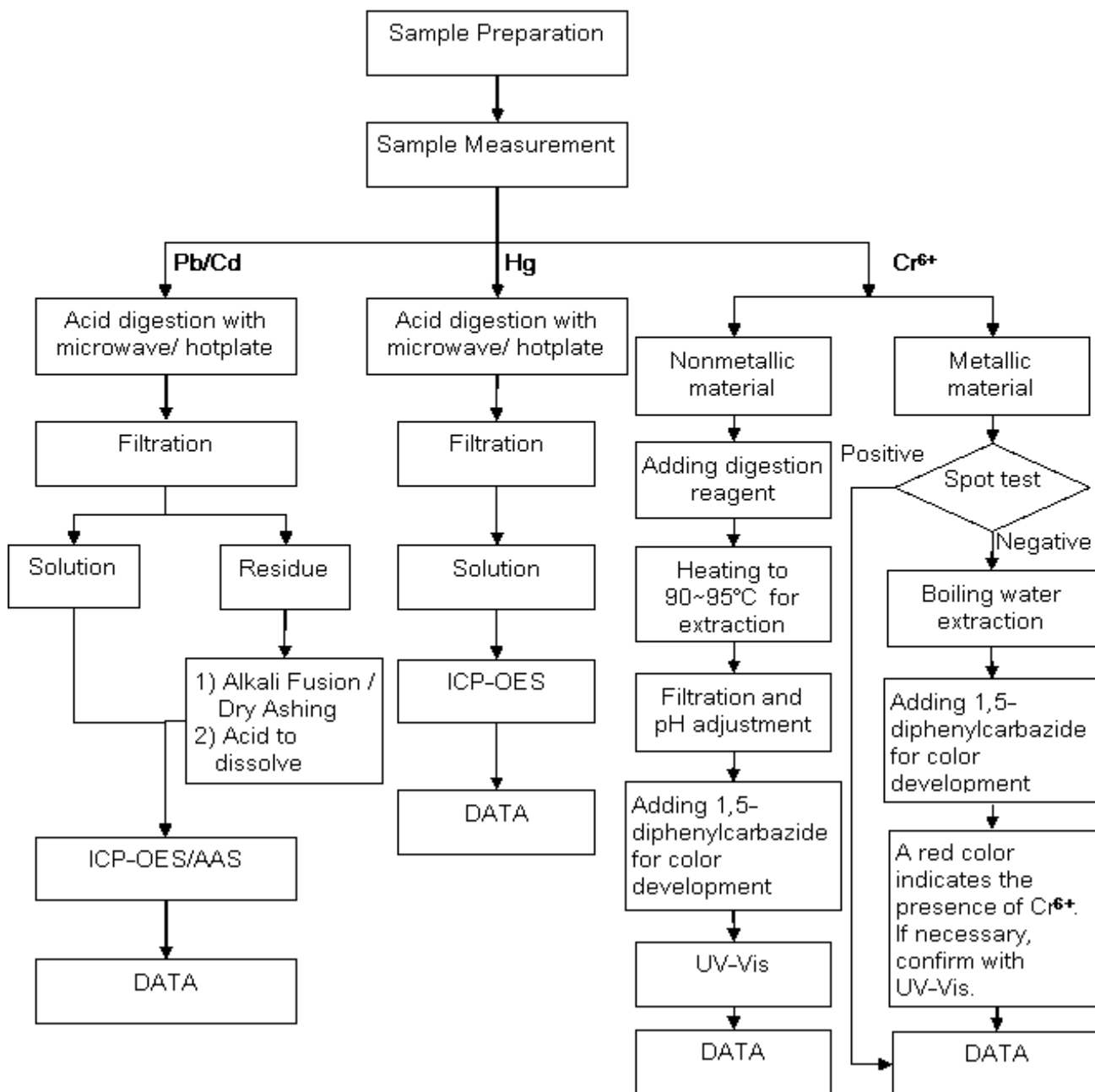
1. mg/kg = ppm
2. N.D. = Not Detected (< MDL)
3. MDL = Method Detection Limit
4. "-" = Not regulated

This document is issued by the Company under its General Conditions of Service printed overleaf or available on request and accessible at http://www.sgs.com/terms_and_conditions.htm. Attention is drawn to the limitation of liability, indemnification and jurisdiction issues defined therein. Any holder of this document is advised that information contained herein reflects the Company's findings at the time of its intervention only and within the limits of Client's instructions, if any. The Company's sole responsibility is to its Client and this document does not exonerate parties to a transaction from exercising all their rights and obligations under the transaction documents. Any unauthorized alteration, forgery or falsification of the content or appearance of this document is unlawful and offenders may be prosecuted to the fullest extent of the law. Unless otherwise stated the results shown in this test report refer only to the sample(s) tested. This document cannot be reproduced except in full, without prior approval of the Company.

ATTACHMENTS

Testing Flow Chart

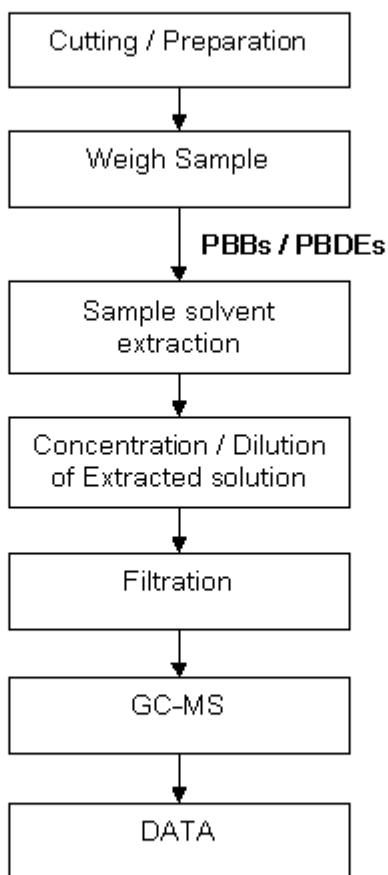
- 1) Name of the person who made measurement: Bella Wang
- 2) Name of the person in charge of measurement: Adams Yu



This document is issued by the Company under its General Conditions of Service printed overleaf or available on request and accessible at http://www.sgs.com/terms_and_conditions.htm. Attention is drawn to the limitation of liability, indemnification and jurisdiction issues defined therein. Any holder of this document is advised that information contained hereon reflects the Company's findings at the time of its intervention only and within the limits of Client's instructions, if any. The Company's sole responsibility is to its Client and this document does not exonerate parties to a transaction from exercising all their rights and obligations under the transaction documents. Any unauthorized alteration, forgery or falsification of the content or appearance of this document is unlawful and offenders may be prosecuted to the fullest extent of the law. Unless otherwise stated the results shown in this test report refer only to the sample(s) tested. This document cannot be reproduced except in full, without prior approval of the Company.

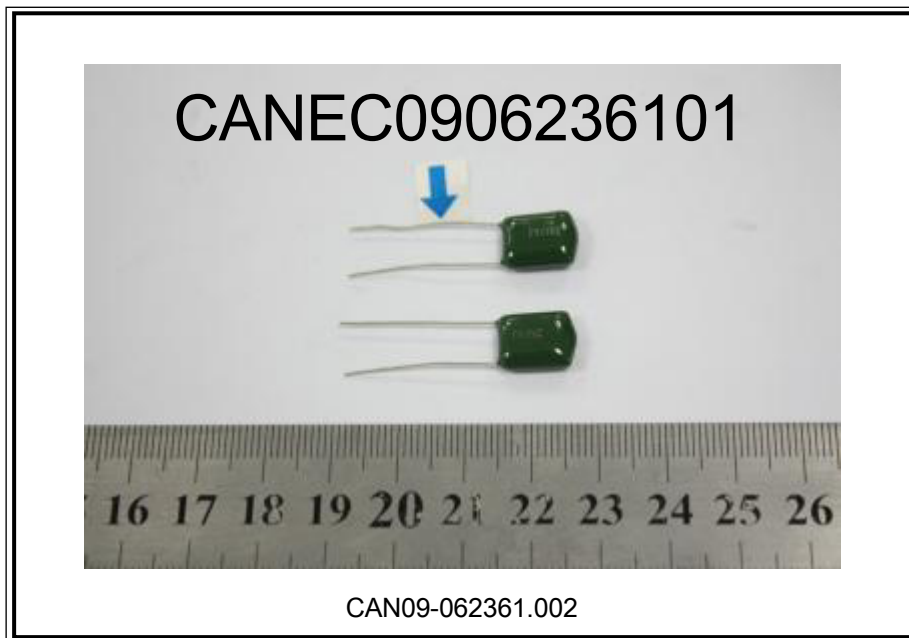
Testing Flow Chart

- 1) Name of the person who made measurement: Tina Zhao
- 2) Name of the person in charge of measurement: Ryan Yang

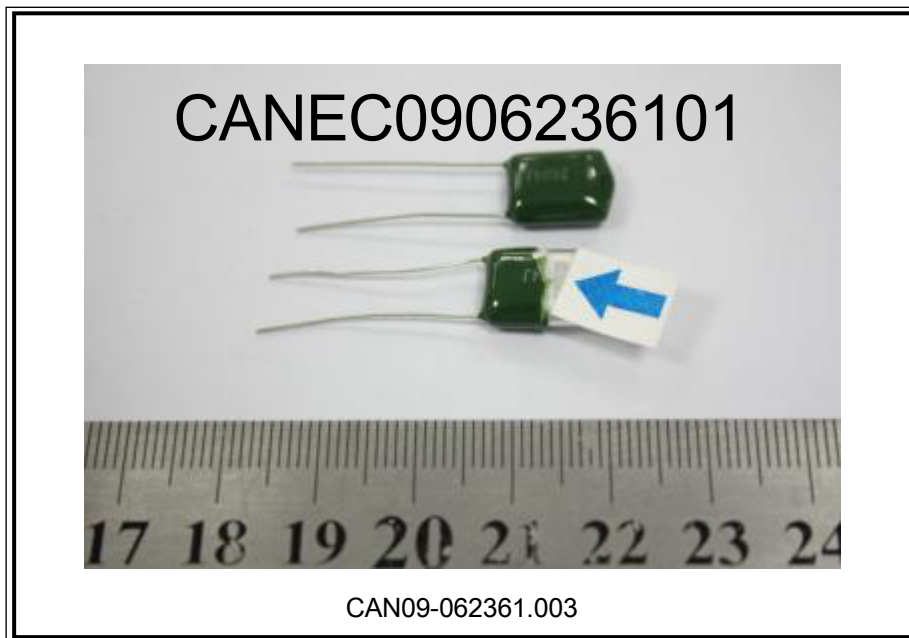


This document is issued by the Company under its General Conditions of Service printed overleaf or available on request and accessible at http://www.sgs.com/terms_and_conditions.htm. Attention is drawn to the limitation of liability, indemnification and jurisdiction issues defined therein. Any holder of this document is advised that information contained hereon reflects the Company's findings at the time of its intervention only and within the limits of Client's instructions, if any. The Company's sole responsibility is to its Client and this document does not exonerate parties to a transaction from exercising all their rights and obligations under the transaction documents. Any unauthorized alteration, forgery or falsification of the content or appearance of this document is unlawful and offenders may be prosecuted to the fullest extent of the law. Unless otherwise stated the results shown in this test report refer only to the sample(s) tested. This document cannot be reproduced except in full, without prior approval of the Company.

Sample photo:



This document is issued by the Company under its General Conditions of Service printed overleaf or available on request and accessible at http://www.sgs.com/terms_and_conditions.htm. Attention is drawn to the limitation of liability, indemnification and jurisdiction issues defined therein. Any holder of this document is advised that information contained hereon reflects the Company's findings at the time of its intervention only and within the limits of Client's instructions, if any. The Company's sole responsibility is to its Client and this document does not exonerate parties to a transaction from exercising all their rights and obligations under the transaction documents. Any unauthorized alteration, forgery or falsification of the content or appearance of this document is unlawful and offenders may be prosecuted to the fullest extent of the law. Unless otherwise stated the results shown in this test report refer only to the sample(s) tested. This document cannot be reproduced except in full, without prior approval of the Company.



SGS authenticate the photo on original report only

*** End of Report ***

This document is issued by the Company under its General Conditions of Service printed overleaf or available on request and accessible at http://www.sgs.com/terms_and_conditions.htm. Attention is drawn to the limitation of liability, indemnification and jurisdiction issues defined therein. Any holder of this document is advised that information contained hereon reflects the Company's findings at the time of its intervention only and within the limits of Client's instructions, if any. The Company's sole responsibility is to its Client and this document does not exonerate parties to a transaction from exercising all their rights and obligations under the transaction documents. Any unauthorized alteration, forgery or falsification of the content or appearance of this document is unlawful and offenders may be prosecuted to the fullest extent of the law. Unless otherwise stated the results shown in this test report refer only to the sample(s) tested. This document cannot be reproduced except in full, without prior approval of the Company.